



**DEED OF MANDATE**

*Figure 1: Front Cover – Maunga Ruapehu from Ohakune Mountain Road*

*Maia, maranga, kia tū ki te Rangi e tū iho nei  
Maia, maranga, kia tū ki te Papa e takoto ake nei  
Kia areare ai te hono ki te pou-whakatipua, ki te pou-whakatawhito  
Ki te poutokomanawa o te Ika e tū nei  
Inā te kōrero, ko te poutokomanawa he maunga, he tipua, he tāngata e  
Ānei a Ngāti Rangi te hora i hēnei kōrero ki mua i te Karauna kia tīmata te  
whakawhitiwhiti kōrero e pā ana ki te whakataunga Tiriti mō Ngāti Rangi.  
Tihei Mouri Ora!*

**General Contact Details:**

Ngāti Rangi Trust  
1 Mountain Road, Ohākune Junction  
PO Box 195  
OHĀKUNE 4625  
Office: 06 3859500  
Fax: 06 3859501  
Email: [office@ngatirangi.com](mailto:office@ngatirangi.com)  
Website: [www.ngatirangi.com](http://www.ngatirangi.com)

## **CONTENTS**

<b>MIHI</b>	<b>P3</b>
<b>CONTENTS</b>	<b>P4</b>
<b>INTRODUCTION</b>	<b>P5</b>
<b>BACKGROUND TO MANDATE</b>	<b>P6</b>
<b>NGĀTI RANGI IWI</b>	<b>P7-10</b>
Who Is Ngāti Rangi	
Common Ancestor	
Ngāti Rangi Hapū	
Ngāti Rangi Marae	
<b>WAI CLAIMS</b>	<b>P10-11</b>
<b>NGĀTI RANGI ROHE (AREA OF INTEREST)</b>	<b>P12-13</b>
<b>OVERLAPPING CLAIMS</b>	<b>P14</b>
<b>WAITANGI TRIBUNAL INVOLVEMENT</b>	<b>P14</b>
<b>THE MANDATE BODY – NGĀTI RANGI TRUST</b>	<b>P14-19</b>
Structure	
Organisation	
Trustees	
Appointing and Removing Trustees	
Withdrawal of Mandate Process	
Accountability	
Tribal Registry	
Funds Management	
Negotiations	
Mandate and Negotiations Subcommittee	
<b>MANDATE HUI AND PROCESS</b>	<b>P19-22</b>
Advertisement	
Venue Locations	
Presentation at Mandate Hui	
Questions at Mandate Hui	
Resolution	
Voting Result	
<b>APPENDICES LIST</b>	<b>P23</b>

## **1. INTRODUCTION**

- 1.1** This Deed of Mandate has been developed to demonstrate that the Ngāti Rangi Trust has obtained a durable mandate to represent Ngāti Rangi in negotiations with the Crown for the comprehensive settlement of all historical Treaty claims for and on behalf of Ngāti Rangi iwi. This Deed of Mandate demonstrates that the Ngāti Rangi Trust has been entrusted by the uri of Ngāti Rangi to enter into negotiations with the Crown to settle their historical Treaty of Waitangi grievances. The purpose of this document is to provide further information and evidence of the process undertaken by the Ngāti Rangi Trust to obtain the mandate.

Any queries related to the Deed of Mandate should be directed to:

### **PRIMARY CONTACT**

**Che Wilson**

Pou Arahi (Executive Manager)

Ngāti Rangi Trust

06 3859500

[che@ngatirangi.com](mailto:che@ngatirangi.com)

### **SECONDARY CONTACT**

**Kemp Dryden**

Chair

Ngāti Rangi Trust

06 3859500

[kemp@ngatirangi.com](mailto:kemp@ngatirangi.com)

## 2. BACKGROUND TO NGĀTI RANGI DEED OF MANDATE

- 2.1. Ngāti Rangi iwi has been recognised by the Crown as a Large Natural Group for the purposes of historical Treaty of Waitangi settlement negotiations. In September 2012<sup>1</sup>, the Ngāti Rangi Trust was endorsed by a Ngāti Rangi hui-ā-iwi to begin to progress the iwi to a Deed of Mandate for the settlement of its historical claims. This includes all historical Ngāti Rangi Wai claims concerning breaches of the Treaty of Waitangi that occurred prior to 21 September 1992, whether or not registered with the Waitangi Tribunal. The mandate will authorise Ngāti Rangi Trust to negotiate an initialed Deed of Settlement to be presented to Ngāti Rangi for ratification. A draft Mandate Strategy was developed and posted on the OTS website in November 2012 and the Ngāti Rangi Trust proceeded to formally seek mandate from the iwi during February 2013. The mandate process has been immensely useful to the Trust, and has assisted the Trust with clarifying and refining the terms of the mandate sought.
- 2.2. The support for the Ngāti Rangi Trust to enter into settlement negotiations was overwhelming. The result of the voting process, conducted by electionz.com, was **99.51% in support**. The final declaration of result for mandate is appended as **Appendix One**.

---

<sup>1</sup> Endorsement was given to the Ngāti Rangi Trust at a hui-ā-iwi on 5 September 2012 and at the Hui-ā-Tau on 22 September 2012.

### **3. NGĀTI RANGI IWI**

#### **3.1. WHO IS NGĀTI RANGI?**

**3.1.1.** Ngāti Rangi is a founding iwi of the Whanganui confederation of tribes.

**3.1.2.** Ngāti Rangi derives its name from the ancestor Paerangi-i-te-Whare-Toka (also known as Paerangi or Paerangi-o-te-Moungaroa), from whence the name Rangi is taken (Pae**RANGI**). Many Whanganui Māori trace descent from Paerangi.

**3.1.3.** Ngāti Rangi has resided in the western and southern region of Te Kāhui Maunga since time immemorial.

#### **3.2. COMMON ANCESTORS**

**3.2.1.** For the purposes of Treaty settlement negotiations, **Ngāti Rangi** means all individuals who descend from the tūpuna:

- a) Paerangi-i-te-Whare-Toka** (also known as Paerangi or Paerangi-o-te-Moungaroa) and one or more of the:
  - i. **Taiwiri** (including her three principle children: Rangituhia, Rangiteauria and Uenukumanawawiri);
  - ii. **Ururangi**; and/or
  - iii. **Tāmuringa**.

#### **3.3. NGĀTI RANGI HAPŪ FOR DEED OF MANDATE**

**3.3.1.** The hapū that descend from these tupuna and are currently active are:

- a)** Ngāi Tuhi Ariki
- b)** Ngāti Hīoi;
- c)** Ngāti Parenga;
- d)** Ngāti Rangi-ki-tai;
- e)** Ngāti Rangihaereroa;

- f)** Ngāti Rangipoutaka;
- g)** Ngāti Rangiteauria;
- h)** Ngāti Rangituhia;
- i)** Ngāti Tongaiti;
- j)** Ngāti Tui-o-Nuku
- k)** Uenukumanawawiri

**3.3.2.** Shared hapū represented by Ngāti Rangi Trust are:

- Ngāti Patutokotoko:

**3.3.2.1.** Ngāti Rangi Trust say that members of Ngāti Patutokotoko can trace descent from the tūpuna of Ngāti Rangi identified in 3.2.1 and include Ngāti Patutokotoko as a shared hapū on this basis. Members of Ngāti Patutokotoko who do not descend from the tūpuna of Ngāti Rangi identified in 3.2.1 are not included in the definition of Ngāti Rangi.

**3.3.2.2.** Ngāti Rangi Trust will only negotiate the settlement of the historical claims of Ngāti Patutokotoko to the extent that they are based on descent from the tūpuna of Ngāti Rangi identified in 3.2.1.

**3.3.2.3.** The historical claims of Ngāti Patutokotoko that are not based on descent from the tūpuna of Ngāti Rangi identified in 3.2.1 will not be settled through negotiations between Ngāti Rangi Trust and the Crown.

**3.3.2.4.** The inclusion of Ngāti Patutokotoko in this deed does not exclude Ngāti Patutokotoko or any historical claims made on behalf of Ngāti Patutokotoko from being included in another large natural group's claimant definition to the extent that they are based on descent from tūpuna other than the tūpuna of Ngāti Rangi identified in 3.2.1.



**3.3.2.5.** How the shared interests of Ngāti Patutokotoko will be represented for the purposes of Treaty settlement negotiations are subject to further discussion and agreement between Ngāti Rangi Trust and other groups who share interests in Ngāti Patutokotoko.

**3.3.3.** It is noted that the inclusion of the tūpuna in 3.2.1 ensures that any hapū that are currently dormant are able to be revived should uri see fit to do so. In addition, uri will also be supported to establish new hapū descending from these tūpuna if they see fit do so

### **3.4. NGĀTI RANGI MARAE FOR DEED OF MANDATE**

**3.4.1.** There are 16 active marae in the Ngāti Rangi rohe and most are affiliated to the Ngāti Rangi rūnanga Te Kāhui o Paerangi. Some of these marae have dual affiliations to both Ngāti Rangi hapū and other hapū in the Whanganui region. Because of these dual affiliations these marae may be represented in Treaty settlement negotiations for Ngāti Rangi and for other large natural groups.

**3.4.2.** Ngāti Rangi marae include:

- a) Kuratahi Marae Kāinga;
- b) Mangamingi Pā;
- c) Marangai Marae;
- d) Maungārongo Marae;
- e) Mote Katoa Pā;
- f) Ngā Mōkai Papa Kāinga;
- g) Raetihi Pā (Te Puke)<sup>2</sup>;
- h) Raketapauma Marae;

---

<sup>2</sup> Ngāti Rangi Trust accept that this marae has dual connections and it is therefore likely to be included in Treaty settlement negotiations for other groups. Many Raetihi Marae descendants supported the Ngāti Rangi Trust mandate hui. Ngāti Rangi Trust have continued to receive support from the marae and it continues to participate in Te Kāhui and is therefore included in this deed.

- i) Te Ao Hou Marae<sup>3</sup>;
- j) Tirohia Kāinga;
- k) Tirorangi Pā;
- l) Tuhi Ariki Pā;
- m) Waitahupārae.

**3.4.3.** Rongomaraeroa-o-ngā-hau-e-whā Marae based at the Waiouru Army Camp is a marae within the Ngāti Rangi rohe/area of interest. This marae has not been included as it is not a Ngāti Rangi marae. There is, however, a positive relationship with Ngāti Rangi Trust and marae members have attended our rūnanga hui and participate in Ngāti Rangi events.

**3.4.4.** It is noted that the inclusion of the marae in 3.4.2 ensures that any marae that are currently dormant are able to be revived should uri see fit to do so.

## 4. WAI CLAIMS

**4.1.** The Wai claims represented by Ngāti Rangi Trust are:

- **WAI 151: Ngāti Rangi comprehensive claim (Waiouru to Ohakune lands claim)**  
A claim by Matiu Marino Māreikura and James Richard Akapita (both now deceased), Mark Tumanako Gray, Robert Mathew Koroniria Gray and Toni James Davis Waho.
- **WAI 277: Raetihi and Mangaturuturu blocks claim**  
A claim by Matiu Marino Māreikura (now deceased), Thomas Shane Māreikura and Lulu Teresa Bridger.
- **WAI 467: Tongariro National Park claim**  
A claim by Noel Akapita (now deceased) and Thomas Shane Māreikura.
- **WAI 554: Mākotuku and Ruapehu Survey Districts claim**

---

<sup>3</sup> This marae is not in Ngāti Rangi's rohe/area of interest, but it is the traditional fishing marae for Ngāti Rangi. The marae is situated in Whanganui where Ngāti Rangi are able to maintain a close connection to Whanganui iwi and hapū.

- A claim by Colin Richards (now deceased), Hune Rapana and Richard Manuauate Pirere for Wai 554.
- **WAI 569: Murimotu 3B1a No 1 Block claim**  
A claim by Peter (Pita) Reo Te Kooro (now deceased) and Sarah Mihiroa Reo for Wai 569.
- **WAI 1250: Ngāti Rangi (Paerangi-i-te-Whare-Toka) claim**  
A claim by Toni James Davis Waho.
- **WAI 1263: Waiouru Army Base, Tongariro Power Development, Karioi State Forest and Railway Lands claim**  
A claim by James Reid, Miller Waho (now deceased), Ngā Kupu Waho, Cassandra Thelma Katarina Stark and Nerissa Tarihira Waitaka Te Patu.
- **WAI 2205: Rangiwaia 4F Block claim**  
A claim by Solomon Taylor (Pop) Wiari (now deceased), Betty-Joe Wiari and Helen Hinerua Mannerings.
- **WAI 2275: Ngāpākihi 1T Block claim**  
A claim by Rangiwaia Rangitahi Tahuparae (now deceased) and Roseanna Tahuparae.

**4.2.** The following WAI claims relate to Ngāti Rangi in part only. Only the parts of these WAI claims that relate to Ngāti Rangi are covered by the mandate and will be negotiated by Ngāti Rangi Trust. These negotiations will not extinguish these WAI claims, and they will still be able to be included in other claimant definitions as WAI claims to be settled in part, they are:

- **WAI 48:** Waimarino block claim – a claim by Kevin Amohia and others.<sup>4</sup>
- **WAI 81:** Waihaia and other lands claim – a claim by Aroha Waitai, Kevin Amohia and others
- **WAI 146:** King Country lands claim – a claim by Hikaia Amohia, Kevin Amohia, Bob Emery and others.
- **WAI 221:** Waimarino No.1 block and railway block claim – a claim by Joan Akapita (now deceased), Don Robinson and others.<sup>5</sup>
- **WAI 759** Whanganui Vested Lands claim – a claim by Meterei Tinirau and others.
- **WAI 1632** Raketapauma block claim – a claim by Hari Benevides, Hoani Hipango and Wilson Smith.<sup>6</sup>

<sup>4</sup> Ngāti Rangi has met with Mr Amohia to discuss the inclusion of the three Wai claims he represents (Wai 48, 81 and 146). Mr Amohia has indicated his support for these claims to be listed in Ngāti Rangi Trust's deed.

<sup>5</sup> Ngāti Rangi has met with Mr Robinson to discuss the inclusion of the claim he represents (Wai 221). Mr Robinson has indicated his support for the claim to be listed in Ngāti Rangi Trust's deed.

<sup>6</sup> Wai 1632 is a whānau claim concerning a discrete block, part of which is within the Ngāti Rangi rohe.

- 4.3.** A number of other claims were included in the Ngāti Rangi Trust mandate strategy at the request of OTS, but after receiving clarification from the claimants and OTS during the mandate process it has been determined that these claims are not Ngāti Rangi claims and are not included in this deed of mandate.

## **5. NGĀTI RANGI ROHE (AREA OF INTEREST)**

- 5.1.** Ngāti Rangi is based at the western and southern foot of Mount Ruapehu. The principal townships within the Ngāti Rangi rohe/area of interest are Raetihi, Ohākune and Waipuna.

- 5.2.** The Ngāti Rangi rohe is explained through the following tongi:

*Mai Paretetai-tonga ki te ūranga mai o te rā ki Te Roro-o-Taiteariki, mai Te Roro-o-Taiteariki ki Moawhango-iti, mai Moawhango-iti rere whakatetonga ki Namunui. Mai Namunui ki Tiri-raukawa whiti atu ki Pohonui-a-Tāne ki Maungakaretū. Mai Maungakaretū ki Raukawa, mai Raukawa ki Waipuna, ko ngā pari kārangaranga o te uru tēnā. Mai Waipuna mārakiraki te topa atu ki Moturoa, Moturoa ki Te Kohatu kia pae ake anō ki te pū ki Paretetai-tonga.*

- 5.3.** The following map provides a pictorial view of the Ngāti Rangi rohe/area of interest (NB: The Ngāti Rangi Trust do not claim this as an exclusive rohe/area of interest):

# The Ngāti Rangi rohe

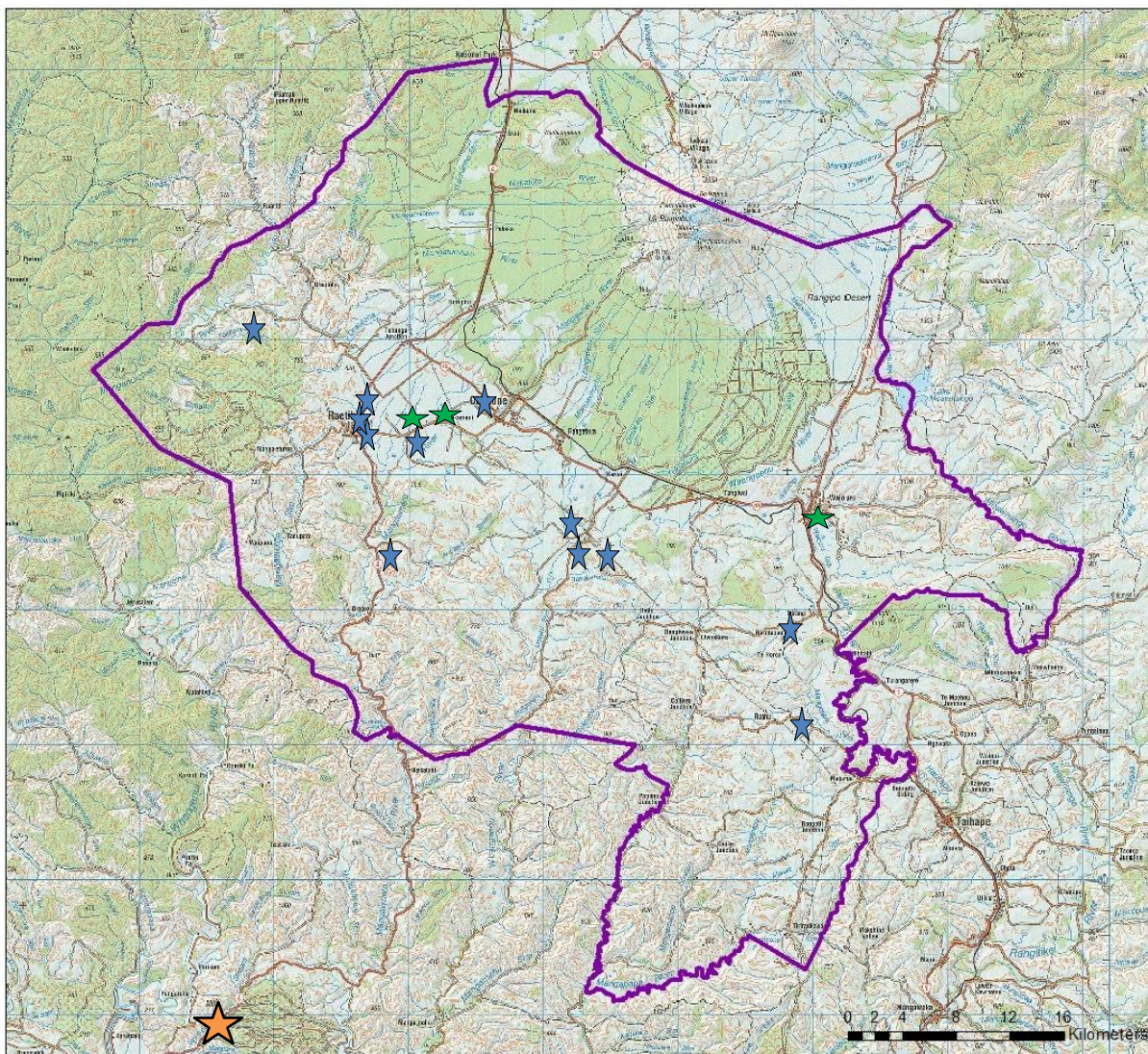


Figure 6: Ngāti Rangi Rohe

## MAP KEY:

- ★ The blue stars represent the 14 Ngāti Rangi marae in the rohe
- ★ The green star represents the NZ Army marae, Rongomaraeroa-o-ngā-hau-e-whā, Te Kotahitanga Marae and Makaranui Kāinga
- ★ The orange star represents Te Ao Hou Marae, the Ngāti Rangi coastal marae at Whanganui City used traditionally for fishing.



## **6. OVERLAPPING CLAIMS**

**6.1.** Iwi with neighbouring or overlapping interests and with whom the Ngāti Rangi Trust is in communication with include:

- a) Mokai Patea;
- b) Ngati Apa;
- c) Ngati Tuwharetoa; and
- d) Whanganui Iwi.

**6.2.** Ngāti Rangi Trust is endeavouring to work with these overlapping groups regarding shared or overlapping interests. The Ngāti Rangi rohe/area of interest set out in this deed may be amended subject to these discussions with overlapping groups.

## **7. WAITANGI TRIBUNAL INVOLVEMENT**

**7.1.** Ngāti Rangi has been an active participant in the National Park (Wai 1130) and Whanganui (Wai 903) district inquiries, both of which have been concluded. The Wai 1130 report was formally released in November 2013, whilst the Wai 903 report is expected to be released in late 2014.

**7.2.** Ngāti Rangi is also engaged in the Taihape (Wai 2180) district inquiry, although not as extensively as in previous inquiries. The attention of Ngāti Rangi has primarily been focused on attempting to enter direct negotiations.

## **8. THE MANDATED BODY – NGĀTI RANGI TRUST**

**8.1.** The mandated body for the purposes of the negotiations is the Ngāti Rangi Trust. The Trust was established in 1992 by key Ngāti Rangi kaumātua and claimants, with the endorsement of the Whanganui River Māori Trust Board. The Trust was established following discussions amongst Ngāti Rangi and broader Whanganui in the late 1980s and early 1990s to co-ordinate and manage iwi affairs and progress the settlement of Treaty grievances, in particular relating to Mount

Ruapehu. The Trust has the widespread support of Ngāti Rangi and currently provides a range of services for its beneficiaries, including in relation to health, social services, education and natural resource management.

## 8.2. STRUCTURE

- a) The Ngāti Rangi Trust is a Charitable Trust, with seven trustees. The Ngāti Rangi Trust represents the marae of Ngāti Rangi and their associated hapū through its rūnanga, Te Kāhui o Paerangi (**Te Kāhui**).
- b) Clause 7(e) of the Ngāti Rangi Trust Deed provides for Te Kāhui to establish rules for the selection of five of the seven trustees of the Trust. Currently Te Kāhui has grouped the marae in to five paepae (clusters) and each paepae selects their representative Trustee on to the Ngāti Rangi Trust. The paepae represent the four 'sub-regions' within the Ngāti Rangi rohe as well as the Pae Tuarā (pahake or kaumātua representative).
- c) Two independent trustees for the Ngāti Rangi Trust are elected at Hui-ā-Tau (AGM).
- d) The term of trustees on the Ngāti Rangi Trust is three years. There is a staggered trustee rotation policy to ensure continuity.

## 8.3. ORGANISATION

- a) The Ngāti Rangi Trust is governed by its Trust Deed and the Rules associated with Te Kāhui, the tribal rūnanga. Copies of these are attached to the Deed of Mandate as **Appendix Two** and **Three** respectively.

## 8.4. TRUSTEES

- a) The Ngāti Rangi Trust has seven trustees. Five trustees are appointed by the five paepae (clusters) of Te Kāhui, which represent the four 'sub-regions' within the Ngāti Rangi rohe as well as the Pae Tuarā (pahake or kaumātua representatives).
- b) The four 'sub-regions' are: Hautapu, Whangaehu, Mangawhero and Te Waimarino. Two Rau Kotahi - or independent trustees - are elected at Hui-ā-Tau (AGM).

c) The current representatives on the Trust are:

- Pae Tuarā: Hune Rāpana
- Hautapu: Kemp Dryden
- Whangaehu: Carl Wilson
- Mangawhero: JHW (Korty) Wilson
- Waimarino: Whetū Manihera
- Rau Kotahi 1: Thomas Māreikura
- Rau Kotahi 2: Shar Amner

## **8.5. APPOINTING AND REMOVING TRUSTEES**

- a) Only full voting members of Te Kāhui can appoint Paepae (Te Kāhui clusters) representatives on to the Ngāti Rangi Trust. Associate (non-voting) members cannot vote on representation to the Trust but can otherwise participate in Te Kāhui if they so wish. No information is withheld from associate members. A definition of members (ie: member marae) is as follows:
- FULL VOTING MEMBER (Marae): A marae that actively participates in the Ngāti Rangi Rūnanga (Te Kāhui o Paerangi) and has expressed support for the Ngāti Rangi Deed of Mandate; and
  - ASSOCIATE (Non-voting) MEMBER (Marae): A marae that is entitled to participate in the Ngāti Rangi Rūnanga, but which for whatever reason is unable to participate as a full voting member, for instance due to lack of capacity. (see Appendix 3 – “Te Kaupapa o Te Kāhui o Paerangi”, para 3.4)
- b) A trustee on the Ngāti Rangi Trust may be removed at any time by a unanimous resolution of all of the trustees of the Trust and the approval of Te Kāhui if, in the opinion of those parties, the continuation in office of that trustee would not be in the best interests of the Trust (clause 8 of the Ngāti Rangi Trust Deed).
- c) Where a Trustee is a marae representative from Te Kāhui:
- The trustee can be removed from the membership of Te Kāhui at any time by the appointing marae, thereby nullifying their position as trustee of the Trust.
  - The trustee can also be removed from the position of trustee of the Trust at any time by the appointing Paepae.



- d) For further information on the appointment and removal of trustees, please see the attached rules of Te Kāhui o Paerangi and the Ngāti Rangi Trust Deed.

#### 8.6. WINTHDRAWAL OF MANDATE

- a) The process for this is outlined in **Appendix Four**.

#### 8.7. ACCOUNTABILITY

- a) The Ngāti Rangi Trust meets monthly at the Trust office and its rūnanga, Te Kāhui, meets bi-monthly at marae based on a rotation process. Kāhui meetings are advertised, as are all Hui-ā-Iwi and Hui-ā-Tau.
- b) Reports and briefing papers are presented to the Trust for decision. Decisions are worked through by consensus and are passed accordingly. Where an issue is of significance, concern or directly affects our marae and/or environment, the Trust will forward decisions to Te Kāhui or to a hui-ā-iwi to advise the Trust of the appropriate course of action. The Trust will then adopt the decision of Te Kāhui or the Hui-ā-Iwi. It is important to note that all Te Kāhui meetings are advertised and open to all uri to attend and participate in.
- c) For the purposes of progressing the mandate and settlement negotiations, a subcommittee of Trustees, Te Kāhui representatives and Ngāti Rangi claimants was established following the Ngāti Rangi Hui-ā-Tau (AGM) in 2012. This group reports to the iwi at our scheduled meetings and more frequently as required (see below for list).
- d) Reporting in relation to the mandate and settlement negotiation process will be via the following:
- Hui-ā-iwi and/or Te Kāhui hui (bi-monthly at a minimum during the mandate and negotiations process)
  - Hui-ā-Tau (AGM held each year on 3<sup>rd</sup> weekend in September)
  - Te Kāhui hui / paepae (cluster) hui (bi-monthly)
  - Email and social media
  - Newsletters
  - Dedicated website – [www.ngatirangi.com](http://www.ngatirangi.com)

#### **8.8. TRIBAL REGISTRY**

- a) Ngāti Rangi Trust has a tribal register and wishes to be approved to receive information from Tūhono.
- b) Registration forms are available on the Ngāti Rangi Trust website and from the Ngāti Rangi Trust office. A copy of the registration form is attached and marked **Appendix Five**. The Ngāti Rangi Trust has been actively encouraging uri to register with the Trust in recent years. In addition, registration forms were available at all mandate hui and uri were encouraged to register and ensure that their whanau were registered. Current registrations number approximately 2,000.
- c) Registrations are approved by the Pou Arahi (Executive Manager) and/or kaumātua.

#### **8.9. FUNDS MANAGEMENT**

- a) Funding is managed under the current financial policies and procedures of the Trust. This includes completion of budgets, forecasts and financial monitoring, payment approval and recording.
- b) XERO is the Accounting Package used by the Trust. We also utilise the support and specialist expertise of our Accountant, as and when required.
- c) The Trust has established a separate account to hold any Crown claimant funding and is committed to setting up any further appropriate funding management mechanisms as required by the Office of Treaty Settlement.

#### **8.10. NEGOTIATORS**

- a) The Trust, in conjunction with the established Mandate and Negotiations Sub-committee (described below and appointed through a Hui-ā-lwi), will appoint negotiators. The sub-committee will develop a terms of reference for the negotiators, for approval by the Trust. The Trust has also retained flexibility to amend this process if necessary to allow for the collective negotiation of particular matters such as shared natural resources or similar.
- b) If negotiators do not adhere to the terms of reference for negotiators, there will be provision for them to be removed upon a recommendation of the Trust. The negotiators will be authorised to undertake all aspects

of settlement negotiations with the Crown, and will report back monthly to both the subcommittee and the Trust, and more regularly if required.

- c) The terms of reference will include criteria for the appointment of negotiators to ensure that skills, ability to engage with the iwi and external expertise and reporting lines directly to the Trust are considered.

#### **8.11. MANDATE AND NEGOTIATION SUBCOMMITTEE**

- a) Following the Ngāti Rangi Hui-ā-iwi held on 5 September 2012 and Ngāti Rangi Trust Hui-ā-Tau held on 22 September 2012 Hui, a Mandate and Negotiations Sub-committee was established to progress the mandate and negotiations for and on behalf of Ngāti Rangi. The sub-committee is a sub-committee of the Ngāti Rangi Trust (as provided for in the Trust Deed) and reports to the Trust and Te Kāhui.
- b) The sub-committee membership is as follows:

<b>Name</b>	<b>Representing</b>
Kemp Dryden	Ngāti Rangi Trust
Mark Gray	Te Kāhui o Paerangi – Pahake (also claimant)
Raana Māreikura	Te Kāhui o Paerangi – Pahake
Thomas Māreikura	Claimant (WAI 277, also Trust)
Hune Rāpana	Te Kāhui o Paerangi – Pahake (also Trust)
Cassandra Stark	Claimant (WAI 1263)
Toni Waho	Claimant (WAI 151, 1250)
Carl Wilson	Te Kāhui o Paerangi (also Trust)
Che Wilson	Ngāti Rangi Trust

#### **MANDATE HUI AND PROCESS**

- 8.12.** Ngāti Rangi initiated discussions regarding settlement with the Office of Treaty Settlements in early 2012 and formal engagement began in August 2012 as part of the Mixed Ownership Model offer by the Crown to iwi. Based on this engagement, Ngāti Rangi Trust held a hui-ā-iwi in September 2012 (referred to above) to gauge support for the initiation of the mandate process with Ngāti Rangi. This proposal was then endorsed at the 2012 Hui-ā-Tau, followed by the establishment and endorsement of the Mandate and Negotiations Sub-committee to progress Ngāti Rangi to a Deed of Mandate.

- 8.13.** Ngāti Rangi mandate hui were held both in and outside the Ngāti Rangi area of interest. These hui were well attended and provided the Trust with a great opportunity to inform and connect with uri.

#### **8.14. ADVERTISEMENT**

- a) The mandate hui were advertised in a number of local, regional and national newspapers, including:

<b>Newspaper</b>	<b>Dated Advertised</b>	<b>Type of Advertisement</b>
Dominion Post	19 Jan 2013	Full advertisement
NZ Herald	19 Jan 2013	Full advertisement
Whanganui Chronicle	19 Jan 2013	Full advertisement
Ruapehu Bulletin	22 Jan 2013	Full advertisement
Christchurch Press	25 Jan 2013	Regional advertisement
Manawatū Standard	2 Feb 2013	Regional advertisement
Hawkes Bay News	25 Jan 2013	Regional advertisement
Waikato Times	25 Jan 2013	Regional advertisement

- b) The mandate hui were also promoted on the Trust's website, and local and national radio, including pānui and interviews on Awa FM (and its website), Radio Wātea and National Radio (and its website).

#### **8.15. VENUE LOCATIONS**

- a) In total, there were nine mandate hui held throughout the country. The Trust had a positive response to the hui and, according to the independent observers from Te Puni Kōkiri, numbers attending the hui were very positive. Full details are set out as follows:

<b>Venue</b>	<b>Date</b>	<b>Attendance Stats<sup>7</sup></b>
Tirorangi Pā, KARIOI	Sat 9 Feb 2013	75
Telstra-Pacific Events Centre, MANUKAU	Sun 10 Feb 2013	54
Kingsgate Motel, Te Rapa, HAMILTON	Sun 10 Feb 2013	41
James Cook Hotel, WELLINGTON	Mon 11 Feb 2013	51
Te Taiwhenua o Heretaunga, HASTINGS	Tues 12 Feb 2013	27
Te Ao Hou Marae, WHANGANUI	Sun 17 Feb 2013	84 <sup>8</sup>

<sup>7</sup> Some uri attended a number of hui. The numbers in the Te Puni Kōkiri report differ slightly to the attendance sheets which were signed and confirmed at the conclusion of each meeting.

<sup>8</sup> There were at least 100 attendees, plus cooks, though not all signed the attendance register.

Venue	Date	Attendance Stats <sup>7</sup>
Mana Tamariki Kura, PALMERSTON NORTH	Sun 17 Feb 2013	24
Sudima Hotel, CHRISTCHURCH	Mon 18 Feb 2013	41
Maungārongo Marae, OHĀKUNE	Tues 19 Feb 2013	72
Road Show Team	All	-97 <sup>9</sup>
	<b>TOTAL</b>	<b><u>372</u></b>

- b) Ngāti Rangi Trust also had an opportunity to present the mandate information and provide a general update on iwi activities to uri in Brisbane and the Gold Coast in May 2013. This hui was organised due to the combined presence of a number of the Mandate and Negotiations Sub-committee members in Australia at the same time.
- c) There were over 50 uri present at the Brisbane hui and Gold Coast hui. This was a positive opportunity to connect with uri that live in Queensland and to share what is happening at home.

#### 8.16. PRESENTATION AT MANDATE HUI

- a) The presentation consisted of information presented by a number of the Mandate and Negotiations Sub-committee, including:
- The purpose of the mandate hui;
  - Summary of Ngāti Rangi identity and history;
  - Summary of Ngāti Rangi Treaty claims;
  - Presentation of Mandate Resolution and voting process;
  - A question and answer session;
  - Voting: Mandate Resolution; and
  - Update on Ngāti Rangi activities.
- b) An overview of each meeting, including questions and answers, has been provided by Te Puni Kōkiri as well as Ngāti Rangi in **Appendix Six** and **Appendix Seven**.

<sup>9</sup> Various trustees, sub-committee members and staff attended hui to support the road show so these people are only counted at their first hui and subtracted from the remainder of hui attended.

#### 8.17. QUESTIONS AT MANDATE HUI

- a) Key questions of note are outlined in the Te Puni Kōkiri and Ngāti Rangi records of the mandate hui in Appendix Six and Appendix Seven.

#### 8.18. RESOLUTION

- a) The mandate resolution presented at each hui was:

***“This hui gives the Ngāti Rangi Trust the mandate to represent Ngāti Rangi in negotiations with the Crown for the comprehensive settlement of all the historical Treaty claims of Ngāti Rangi”***

#### 8.19. VOTING RESULT

- a) As noted above, the result of the voting process, conducted by electionz.com, was **99.51% in support** of the above resolution.
- b) Registered tribal members were able to conduct a secret ballot via the following:
  - Post.
  - Ballot at hui.
  - Internet ballot with individual password access.
- c) The final declaration of result for mandate is appended as Appendix One and details the number of eligible voters, how many voted for and against the resolution and other relevant information. For an example of voting papers, see **Appendix Eight**.

## **APPENDICES LIST**

- Appendix One:** Final Declaration of Result for Mandate Voting
- Appendix Two:** Ngāti Rangi Trust Deed (as at September 2013)
- Appendix Three:** Te Kaupapa o Te Kāhui o Paerangi - Te Kāhui o Paerangi Rules (as at October 2013)
- Appendix Four:** Withdrawal of Mandate Process
- Appendix Five:** Ngāti Rangi Registration Form
- Appendix Six:** Te Puni Kōkiri Notes of Mandate Meetings (**not for public notification**)
- Appendix Seven:** Ngāti Rangi Notes of Mandate Meetings (**not for public notification**)
- Appendix Eight:** Example of Ngāti Rangi Mandate Voting Papers

